

COLLECTIONS

2019



ATELIER

BESPOKE

Our Atelier collections are totally bespoke pieces of furniture using a mix of materials to match your individual taste.



TOP & SIDEBOARD: ASH (GREY) WITH AGED COPPER INLAY

ATELIER

BESPOKE

Our Atelier service offers bespoke; handmade and tirelessly original pieces made by those with a passion for their craft.

We love to create unique furniture that exemplifies style and our new Atelier service lets you combine our favourite natural materials, to provide an experience in elegance.

Available in a range of sizes, designs and finishes, these pieces will add a contemporary statement to any room – while also providing you with the incredible quality and durability we pride ourselves on.

With Atelier we combine our best-loved materials, to create a final piece even greater than the sum of its parts. Each piece is truly one-of-a-kind.

020 3773 1430
question@macandwood.com
www.macandwood.com



TOP: ASH WITH AGED COPPER INLAY
SIGNATURE FRAME: GRAPHITE BLACK



SIGNATURE

COLLECTION

Handmade reclaimed, oak and ash furniture married with brushed stainless or powder coated steel frames make up our unique Signature collection.

MAC[®]
+WOOD



// Mac+Wood furniture designs are as bold as they are contemporary, warming your home with a mix of materials that truly create a statement worthy of the space you have created for them //



RECLAIMED, OAK & ASH



DEKTON RANGE



COPPER OR ZINC FINISHES AVAILABLE

SIGNATURE DESIGN

The classic Mac+Wood advocate, beautifully crafted surfaces coupled with our unmistakable leg design.

Perfect for meeting, eating and sharing experiences with friends and loved ones, it's a reflection of our vision. Simple design and high quality materials that allow the natural beauty to shine through.

- Warm reclaimed wooden surface in a variety of finishes, also available in all our unique and gorgeous materials
- Elegant brushed stainless or powder coated steel legs in any colour you want
- Matching side and end benches.

020 3773 1430
question@macandwood.com
www.macandwood.com



TOP: RECLAIMED WOOD (DARK)
FRAME: BRUSHED STAINLESS STEEL



Frame available with or without the 'ski' leg in brushed stainless or colour powder coated steel



SWEEP DESIGN

An evolution of our Signature design, the Mac+Wood "Sweep" has all the features of a modern dining table made for a style conscious owner looking to make an impression with a bold centerpiece.

A modern dining table with a twist, the "Sweep" design has angled legs pointing out to give a more off-kilter, but no less elegant look than it's predecessor, the "Signature" Table. The angles produce a slightly more laid back impression, perfect for a home or restaurant/bar and available in sizes to match both.

- Durable and elegant, Reclaimed Wood, Ash, Oak, Copper, Zinc or Dekton surfaces available
- Modern dining table look, with a striking, angled frame
- Sizes from 1.8m to 3.4m for up to 14 guests
- Bespoke options available on request.

020 3773 1430
question@macandwood.com
www.macandwood.com



TOP: AGED COPPER
FRAME: ANTHRACITE



FAMILY DESIGN

For a sturdier look that loses none of its elegance, our Family design is built to fit all, with seating options for 4-14 people

A beautiful, hard-wearing centerpiece that'll provide a cherished family gathering place for years to come. The Mac+Wood Family Table combines practicality with striking design. The legs have been subtly sculpted and fitted to align with the tabletop to give the piece the appearance of having been carved from a solid block.

- Bespoke sizing and material options to suit
- Designed to be hard-wearing and durable for every family occasion
- Matching side and end benches to seat 2-8 guests.

020 3773 1430
question@macandwood.com
www.macandwood.com



TOP: NATURAL COPPER
FRAME: GRAPHITE BLACK



TOP: RECLAIMED WOOD (DARK)
FRAME: BRUSHED STAINLESS STEEL



CROSS DESIGN

The Cross frame table introduces a beautiful X frame design that makes the legs its defining feature and a must-have centerpiece. Hand-crafted at the highest level of quality, this sleek design is a stunning addition to the Mac+Wood selection of table designs, bringing with it a departure from the conventional and an entirely new look to match your reclaimed wood, copper, zinc or Dekton table top.

Ideal for maximising the number of guests around the table as this design allows chairs to 'straddle' over the frame legs if need be.

- Elegant X frame table leg design in brushed stainless steel or powder coated in any colour (as shown)
- Matching 'Cross frame' benches to accompany table
- Sizes from 1.8m to 3m for up to 14 guests.

020 3773 1430
question@macandwood.com
www.macandwood.com



TOP: DEKTON® (TRILIUM)
FRAME: BRUSHED STAINLESS STEEL



TOP: ZINC (LIGHT PATINA)
FRAME: GRAPHITE BLACK



TRON

DESIGN

Our boundary pushing “Tron” design is an inspired work of art. This pedestal table is the epitome of modern elegance.

This design has an unashamed, contemporary feel from the positioning of the legs closer to the centre line of the table. This also allows for extra seats around the table. With no obstructions on each corner, the pedestal table design is able to boast the tabletop of your choosing whilst avoiding compromising on stability or style.

- Durable and elegant, reclaimed wood, ash, oak, copper, zinc or Dekton surfaces
- Pedestal table leg positioning creates more space and an ultra modern look
- Sizes from 1.8m to 3m for up to 14 guest
- Bespoke options available on request

020 3773 1430
question@macandwood.com
www.macandwood.com



TOP: RECLAIMED WOOD (DARK)
FRAME: UMBRA GREY



TOP: ZINC LIGHT PATINA



TRUNK DESIGN

Distinctively unique the Mac+Wood Trunk table plays with a striking design suited to any modern home

Gorgeous, wide metal legs rise up like trunks to form an elegant geometric surface on the tabletop itself. A perfect expression of our pursuit of innovation in design and fit for any occasion, the Trunk Table is a guaranteed eye-catcher, conversation-starter and show-stopper.

- Extensive stainless steel frame working contributes to an overall more modern design
- Frames available in Colour Powder Coated or Brushed Stainless Steel
- Matching side and end benches available.

020 3773 1430
question@macandwood.com
www.macandwood.com



TOP: DISTRESSED COPPER
FRAME: GLOSS BLACK



TOP: RECLAIMED WOOD (DARK)
FRAME: BRUSHED STAINLESS STEEL



MODERN

DEKTON & METALS

Sumptuous modern materials and beautifully crafted surfaces coupled with all of our unmistakable leg designs.



MODERN

DEKTON & METALS

The classic Mac+Wood pieces in sumptuous modern materials, beautifully crafted surfaces coupled with all of our unmistakable leg designs.

A stunning centre piece perfect for family dining, entertaining, and sharing experiences with friends and loved ones, this range is a modern look at our classic designs.

All our furniture is designed around the principle of simple design and high quality materials, to allow each component to look its best.

- Available in modern Copper & Zinc and Dekton in a variety of finishes.
- Elegant brushed stainless or powder coated steel legs in any colour you want
- Matching side and end benches.

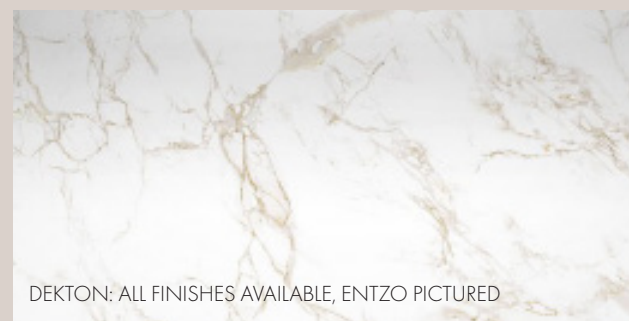
020 3773 1430
question@macandwood.com
www.macandwood.com



TOP: DEKTON TRILIUM



TOP: ZINC AVAILABLE IN NATURAL & LIGHT PATINA (PICTURED)



DEKTON: ALL FINISHES AVAILABLE, ENTZO PICTURED



TOP: COPPER AVAILABLE IN NATURAL, BRONZED, DISTRESSED & AGED (PICTURED)



MONDULAR

SYSTEM

Completely bespoke modular system uniquely designed to provide a low shelving profile, wall propped or truly free standing.

MAC[®]
+WOOD



MONDULAR SYSTEM

Mac+Wood's designer presents a truly innovative piece of modern furniture. Created to stand unaided in the centre of two rooms, or against a single wall.

Mondular is a bookcase, display case, television surround, Hi-Fi unit and more.

When we designed Mondular our goal was to create a totally flexible system which can be personalised with an almost infinite number of different layouts, with a modular system forming the base of our design.

Mondular exemplifies great design.

We created a system that has the ability to store things in a bespoke style, with minimal footprint and maximum flexibility.

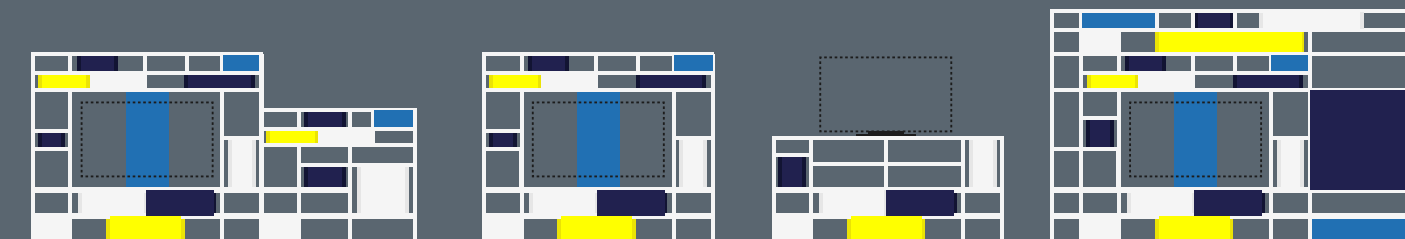
Mondular's design embodies our philosophy, combining bold, unique looks with hard-wearing, practical materials.

With Mondular we have created a new, more intelligent, contemporary use of space.

020 3773 1430
question@macandwood.com
www.macandwood.com



TRULY FREE STANDING



MONDULAR IS A FREE STANDING OR WALL PROPPED MODULAR SYSTEM THAT IS COMPLETELY BESPOKE IN EVERY WAY



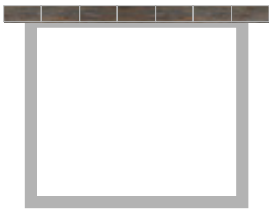


INTERIOR DESIGN BY DANIEL HOPWOOD
SIGNATURE TABLE IN RAW FINISH BY MAC+WOOD

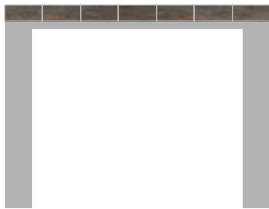
SIZES & OPTIONS

Seat from 4 to 14+ guests with our totally customisable sizes ranging from 200cm to 340cm long x 90cm to 140cm wide.

Our frame designs are available in Brushed Stainless steel or Colour Powder Coated in any colour you wish from the RAL colour chart.



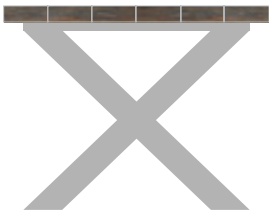
Signature design



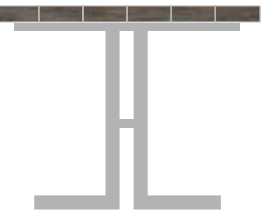
Family design



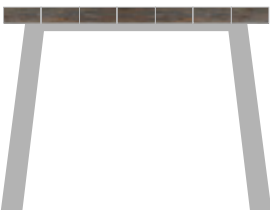
Trunk design



Cross design



Tron design



Sweep design

Wood finishes available in Reclaimed Wood, Oak & Ash



Raw



Brown



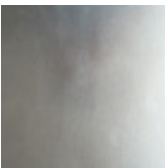
Dark



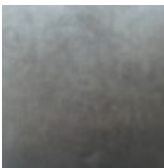
Grey

All our table and furniture designs are also available with Dekton table top finishes, with a wide range of marble, natural and gloss options, ask for details.

Zinc

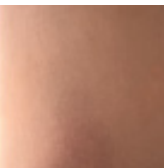


Natural

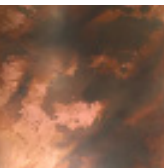


Light Patina

Copper



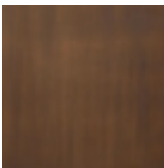
Natural



Distressed



Aged



Bronzed

ORDER

1

Your order enquiry is received and discussed with us directly. We'll be in touch asap

2

We send a measurement plan to agree along with a quote. 50% initial payment made

3

Your table is produced and delivery arranged. Final payment made

020 3773 1430
question@macandwood.com
www.macandwood.com

